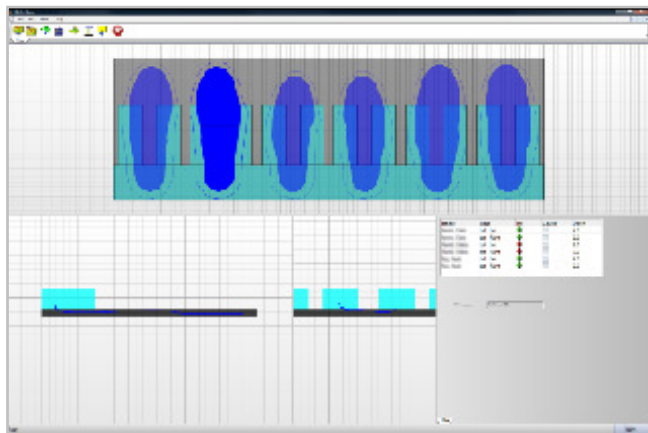
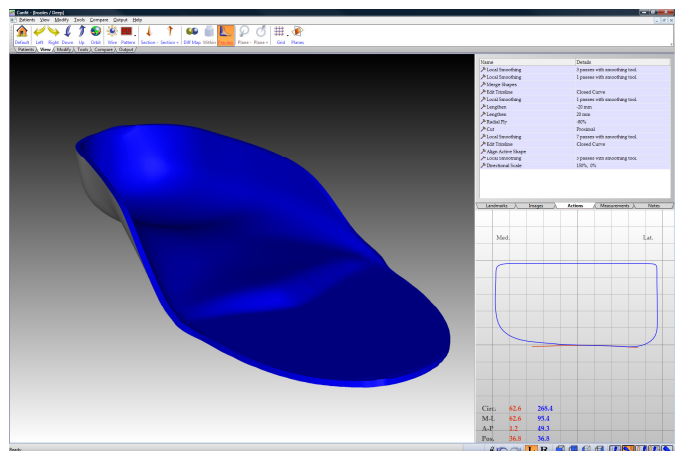
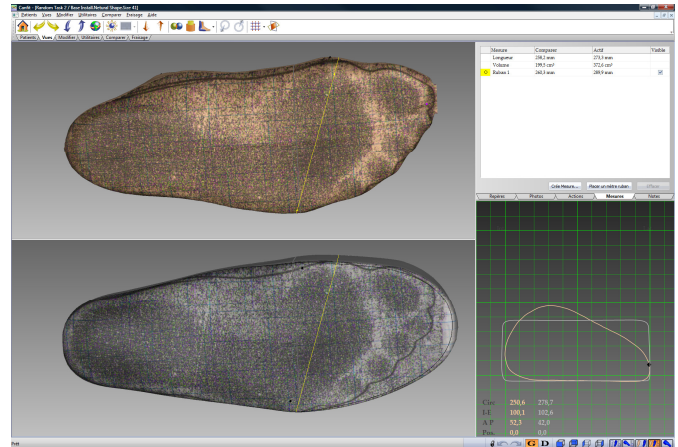


Canfit ∞ ™ Insole Design

- Design custom foot orthotics quickly and easily with the **Canfit ∞** Insole Design Software.
- The Insole Design application integrates plantar surface information, weight-bearing imprint information and clinical requirements of the footwear into a computerized design process
- Alternatively, the design application allows you to use measurement and weight-bearing imprint data as your starting point to design a custom soft orthotic
- Following the scan and after entering weight-bearing imprint data, the clinician has the option to select an insole from the library of existing soft insoles, or work directly on the scanned shape.



- Design local modifications such as:
 - ✓ Applying toe spring
 - ✓ Inserting metatarsal pads
 - ✓ Providing arch support
- Add relief for:
 - ✓ Ulcers
 - ✓ Heel-spurs
 - ✓ Bunions
 - ✓ Hammer toe
- Manufacture your custom insole as a positive model carved from MDF or a negative device carved from EVA ranging from 20-70 shore.

Canfit ™ Insole Design

Computer Hardware

The following system configuration is recommended:

- Operating system: Windows® 7 Professional - 32 bit (or 64 bit)
- Memory: 2 GB RAM (or more)
- Hard Disk Space: 250GB (or larger) hard drive with 5GB free for program files & data
- Processor: 2 GHz or faster. Multi-core/multi-CPU systems supported. Intel Core i5 or i7 cpu's are recommended for best performance.
- Video: Modern graphics adapter and LCD display supporting 1280x1024 resolution (and higher) at 32-bit color, with hardware-accelerated OpenGL support and Microsoft Certified drivers, such as the NVIDIA GeForce GTX 470, or the ATI Radeon HD 5850. For laptops - an ATI Mobility Radeon or NVidia GeForce notebook based graphics cards will give the best performance. Please check with Vorum for an up-to-date list of supported graphics cards.
- DVD+/-RW drive
- Mouse + Spaceball 6DOF input controller (see [Spaceball and Space Pilot](#))

Please contact your sales representative for further information.

Supported Hardware

Digitizers: Canfit ™ Yeti™ 3D Foot Scanner
Canfit ™ Plantar Scanner

Carvers: Canfit ™ FootWare Carver
Canfit ™ Insole Carver
Canfit ™ P&O 4-Axis Carver

VORUM

RESEARCH CORPORATION

8765 Ash Street, Suite 6

Vancouver, British Columbia V6P6T3 Canada

Tel: 604 321-7277

Fax: 604 321-5345

e-mail: canfit@vorum.com

web page: www.vorum.com